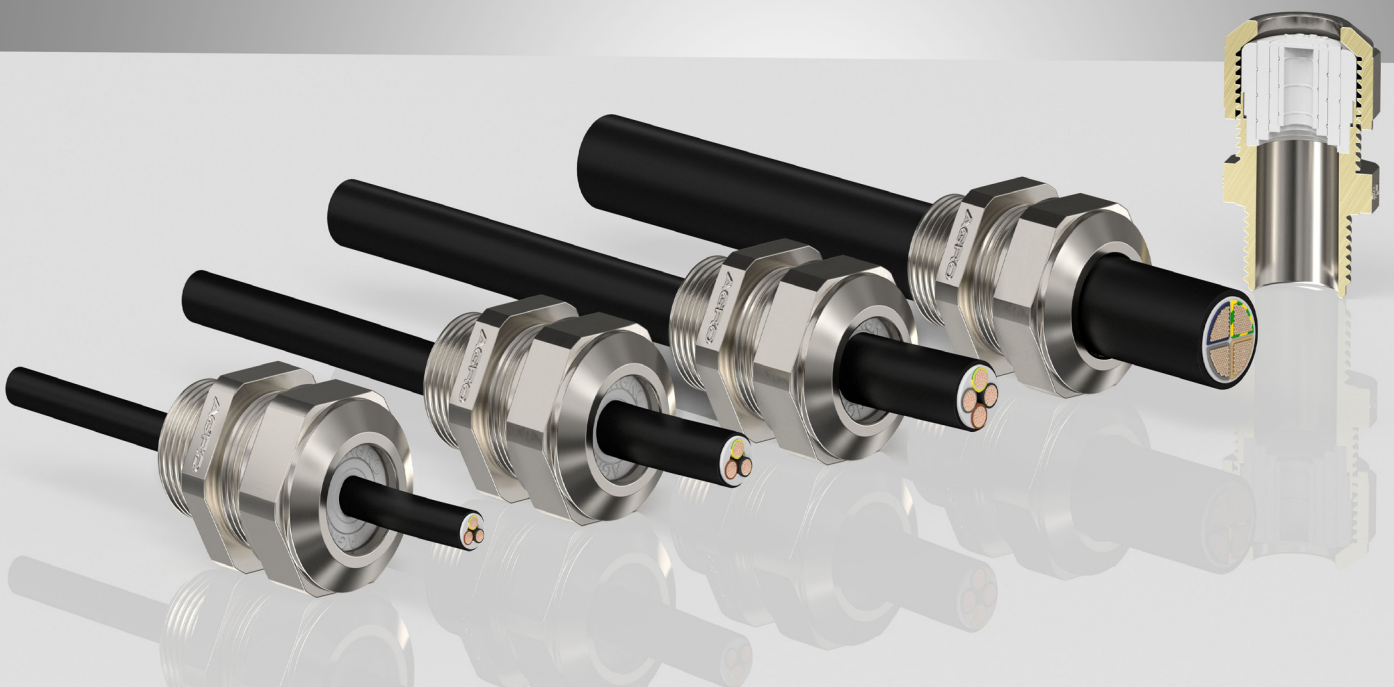


Progress® multiLAYER

Universal cable gland with maximum clamping range.

For maximum installation flexibility.

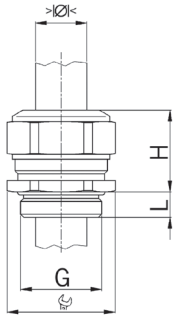


Cable glands Progress® multiLAYER nickel-plated brass and synthetic material

Maximum installation flexibility thanks to maximum clamping range

The production of cable harnesses is increasingly outsourced and external cable assemblers manage the cabling of drive systems and converters. Since different cables are often used, greater flexibility is required in day-to-day work. With the new **Progress® multiLAYER**, only one type of cable gland needs to be managed per entry thread.

The new **multiLAYER sealing insert** offers an extremely wide clamping range and features integrated dust protection for the cable gland. The slotted version allows quick assembly of pre-assembled cables. It uses Progress® compression technology and clamps cables gently and without causing necking. Furthermore, this new sealing insert can be easily combined with other components of the versatile modular Progress® product range.



Material:
Sealing insert:
Colour of sealing insert:
O-Ring:
Strain relief:
Temperature range:
Protection class:

Body in nickel-plated brass

Nickel-plated brass
 Special AGRO TPE
 Light grey RAL 7035
 NBR
 Version A, acc. to EN 62444
 - 50 °C / + 105 °C
 IP 68 / IP 69

Body in synthetic material

Agromid, glass fibre reinforced
 TPE
 Black
 -
 Version A, acc. to EN 62444
 - 20 °C / + 100 °C
 IP 68



Short entry thread metric

Four-piece sealing insert
 not overall length insulated



G	>Ø< mm		H mm	L mm	Art.-Nr.	
M20x1,5	4.0 - 15.0	24	23	6	F1000.4.20	50
M25x1.5	6.0 - 20.5	30	25	7	F1000.4.25	25
M32x1.5	10.0 - 25.5	36	28	8	F1000.4.32	25



Long entry thread metric

Four-piece sealing insert
 not overall length insulated



G	>Ø< mm		H mm	L mm	Art.-Nr.	
M20x1.5	4.0 - 15.0	24	23	10	F1100.4.20	50
M25x1.5	6.0 - 20.5	30	25	11	F1100.4.25	25
M32x1.5	10.0 - 25.5	36	28	13	F1100.4.32	25



Light-grey RAL 7035, entry thread metric

Four-piece sealing insert
 not overall length insulated

G	>Ø< mm		H mm	L mm	Art.-Nr.	
M20x1.5	4.0 - 15.0	27	28	13	1571.4.20	50
M25x1.5	6.0 - 20.5	34	33	13	1571.4.25	25
M32x1.5	10.0 - 25.5	41	35	15	1571.4.32	25



Black RAL 905, entry thread metric

Four-piece sealing insert
 not overall length insulated

G	>Ø< mm		H mm	L mm	Art.-Nr.	
M20x1.5	4.0 - 15.0	27	28	13	1540.4.20	50
M25x1.5	6.0 - 20.5	34	33	13	1540.4.25	25
M32x1.5	10.0 - 25.5	41	35	15	1540.4.32	25



White RAL 9010, entry thread metric

Four-piece sealing insert
 not overall length insulated

G	>Ø< mm		H mm	L mm	Art.-Nr.	
M20x1.5	4.0 - 15.0	27	28	13	1520.4.20	50
M25x1.5	6.0 - 20.5	34	33	13	1520.4.25	25

KAISER GmbH & Co. KG

Ramsloh 4 · 58579 Schalksmühle
 GERMANY

Tel. +49 (0)2355.809.0 · Fax +49 (0)2355.809.21

www.kaiser-elektro.de · info@kaiser-elektro.de

