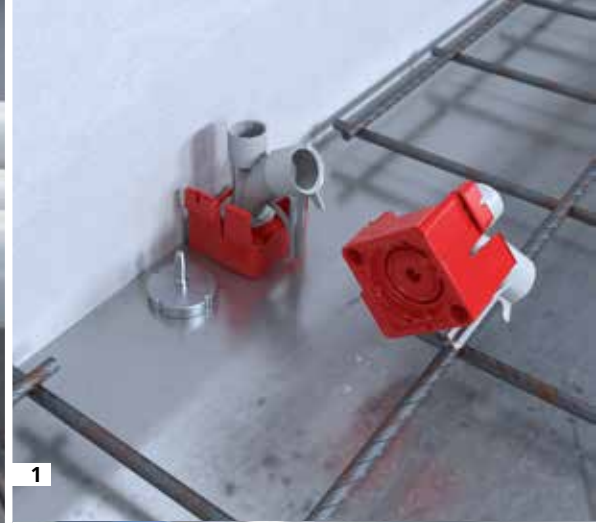


Wall and ceiling transitions.

For connecting conduits at transition points.

Concrete construction - Well-connected from the start.





1



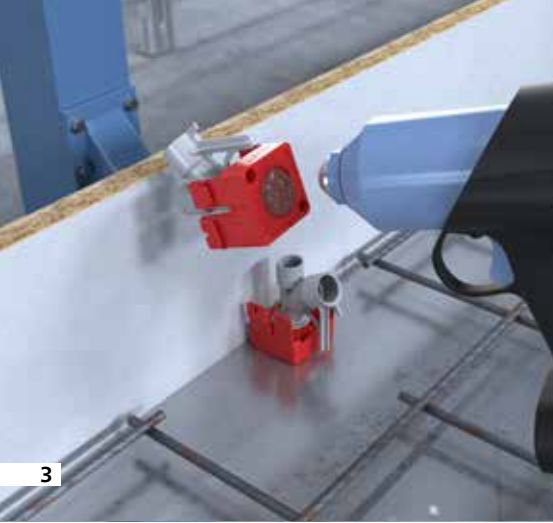
2

Wall and ceiling transitions.

For the first time, the new end and transition bushes and ceiling transitions 30° and wall and ceiling transitions 90° allow the automated positioning and fastening of conduit connections in precast concrete elements. The integrated slot for the system magnets (Art. no. 1299-69) and system magnet PLUS (Art. no. 1299-70) enables a safe, formwork-flush fit on the horizontal steel formwork for the circulation systems used in the concrete plants. The new articles also provide alternative options for fixing to formwork. They can be fixed using hot glue, steel nails and even for overhead installation in solid wall elements using Prefix® Universal support seats (Art. no. 1261-00).

- Slot for system magnet (Art. no. 1299-69) and system magnet PLUS (Art. no. 1299-70) for use in automated production lines
- For conduit sizes of Ø 20 mm, Ø 25 mm and Ø 32 mm
- All end and transition bushes, wall and ceiling elbow 30° and wall and ceiling transitions 90° can be combined with each other
- Resealable closing cover to protect the empty conduit system from concrete when installed on top, during transport and when erected on site
- Signal bristle and bold colouring for easy retrieval in the concrete surface
- Easy cable pull-in due to optimal transition radius
- 1-piece design, immediately ready for use

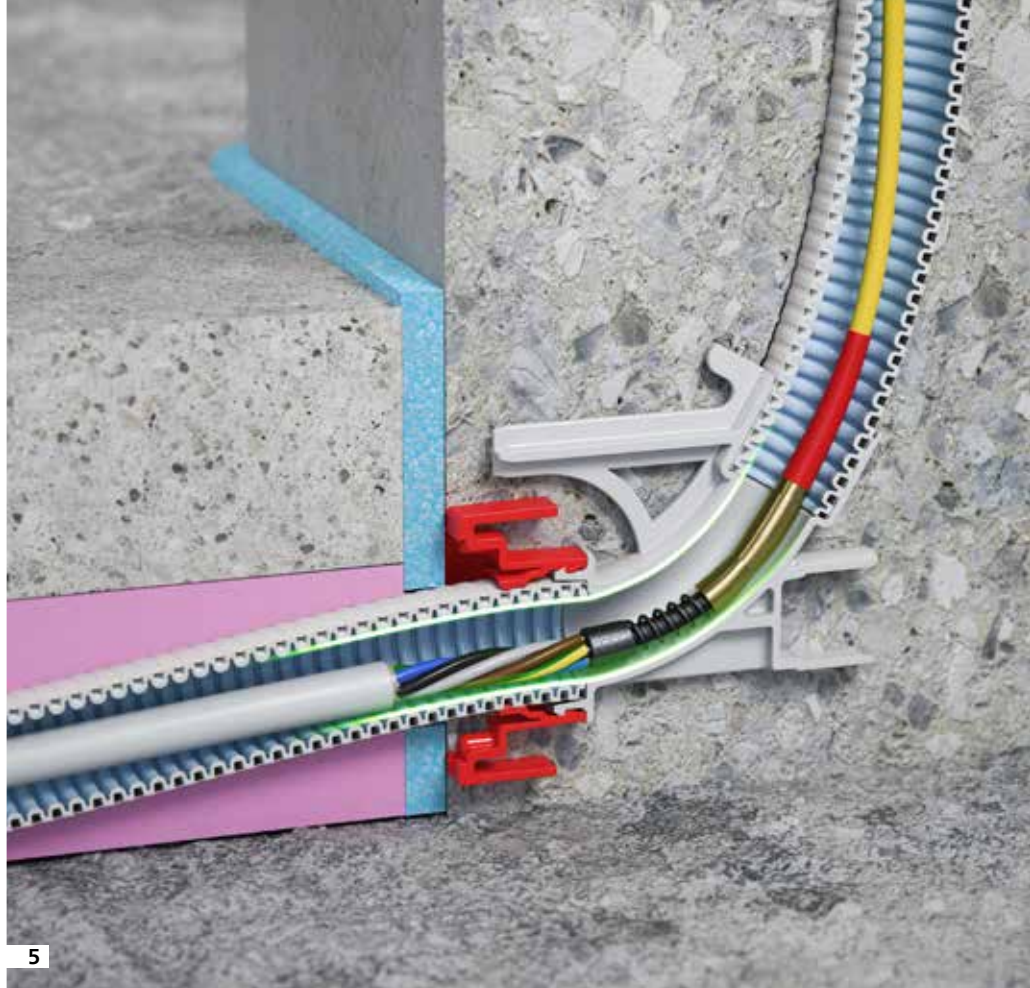




3



4



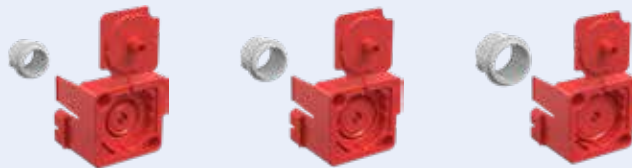
5

- 1 Wall and ceiling transitions with slot for the KAISER system magnet (Art. no. 1299-69) and system magnet PLUS (Art. no. 1299-70).
- 2 Perfect connections for automated production.
- 3 Wall and ceiling transitions for fixing by means of hot glue.

- 4 Prefix® universal support seat (Art. no. 1261-00) - Simple and fast processing for overhead installations.
- 5 The optimal elbow radius of the new unit facilitates flexible and easy electric cable insertion.

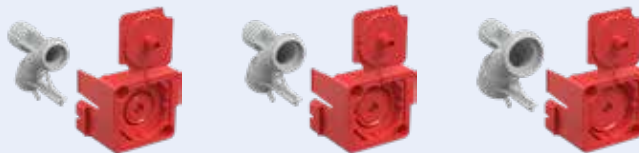
End and transition bush, Ø 20 / 25 / 32 mm

Art. no. 1261-82/-83/-84



Wall and ceiling transition 30°, Ø 20 / 25 / 32 mm

Art. no. 1261-92/-93/-94



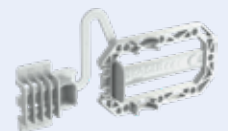
Wall and ceiling transition 90°, Ø 20 / 25 / 32 mm

Art. no. 1261-95/-96/-97



Prefix® universal support seat

Art. no. 1261-00



At a glance.

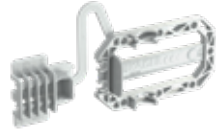


Fixing



System magnet /
System magnet PLUS
Art. no. 1299-69 / 1299-70

Accessories



Prefix universal support seat
Art. no. 1261-00



Project list:
**To the concrete construction
products for precast concrete.**

[http://www.kaiser-elektro.org/
bbwerksfertigung](http://www.kaiser-elektro.org/bbwerksfertigung)

End and transition bushes

Ø 20 mm



Art. no. 1261-82

Ø 25 mm



Art. no. 1261-83

Ø 32 mm



Art. no. 1261-84

Wall and ceiling transition 30°

Ø 20 mm



Art. no. 1261-92

Ø 25 mm



Art. no. 1261-93

Ø 32 mm



Art. no. 1261-94

Wall and ceiling transitions 90°

Ø 20 mm



Art. no. 1261-95

Ø 25 mm



Art. no. 1261-96

Ø 32 mm



Art. no. 1261-97

Technical information and advice

All current further information on products, system solutions and communication media can be found on our website at www.kaiser-elektro.de

For additional questions or information, our team of technical consultants will be happy to assist you and look forward to talking to you: **+49 (0) 2355 / 809-61** · technik@kaiser-elektro.de

KAISER GmbH & Co. KG

Ramsloh 4 · 58579 Schalksmühle
GERMANY
Tel. +49(0)2355.809.0 · Fax +49(0)2355.809.21
www.kaiser-elektro.de · info@kaiser-elektro.de

 **KAISER**
The basis for good installation