

# 90° wall and ceiling transitions.

For continuous empty conduits  
in prefabricated house  
and modular construction.

For air-tight connecting of electrical installation conduits  
at transition points.



## Installation in open wall elements



Machine creation of the exact installation opening of Ø 38 mm.



Fixing of the wall connection element through the peripheral sealing ribs in the wall boarding.



Attach the 90° bend to the electrical installation conduit and ...

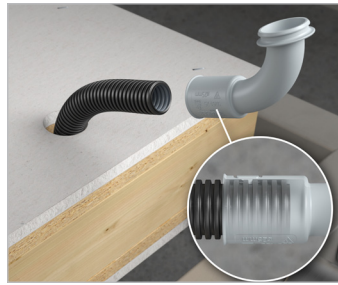


... snap into the wall connection element already installed.

## Installation in closed wall elements



Machine creation of the precise installation opening of Ø 38 mm.



The protruding electrical installation conduit is inserted into the conduit holder of the 90° bend up to the depth stop and locked together.



After attaching the wall connection element, the 90° wall and ceiling transition is guided back into the wall element through the installation opening ...



... and firmly clamped in the wall boarding.

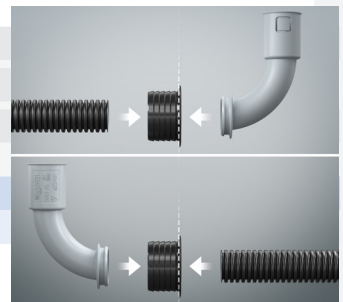
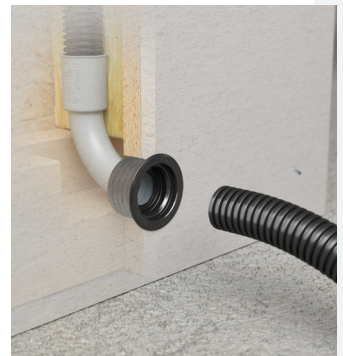
## At a glance.

### 90° wall and ceiling transitions

- 2-piece design with secure catch mechanism
- Air-tight component closure for front and rear installation in the boarding of wall elements or modules
- Flexible cable pull-in from both directions thanks to 90° bend without abutting edge
- Wall connection elements can be used on both sides for 90° bends and electrical installation conduit
- Shallow structured collar for a firm and flush-mounting fit in the wall element



INNOVATION



Length x width x depth	102 x 47x 73.5 mm	102 x 47 x 76mm
DIN EN conduit Ø	20 mm	25 mm
For cut hole Ø	38 mm	38 mm
Number of parts	2	2
<b>Art. no.</b>	<b>9261-20</b>	<b>9261-25</b>
Packaging inner/dispatch	- / 100	- / 100

### KAISER GmbH & Co. KG

Ramsloh 4 · 58579 Schalksmühle  
GERMANY

Tel.+49 (0) 23 55 / 809-0 · Fax+49 (0) 23 55 / 809-21

[www.kaiser-elektro.de](http://www.kaiser-elektro.de) · [info@kaiser-elektro.de](mailto:info@kaiser-elektro.de)

KAISER