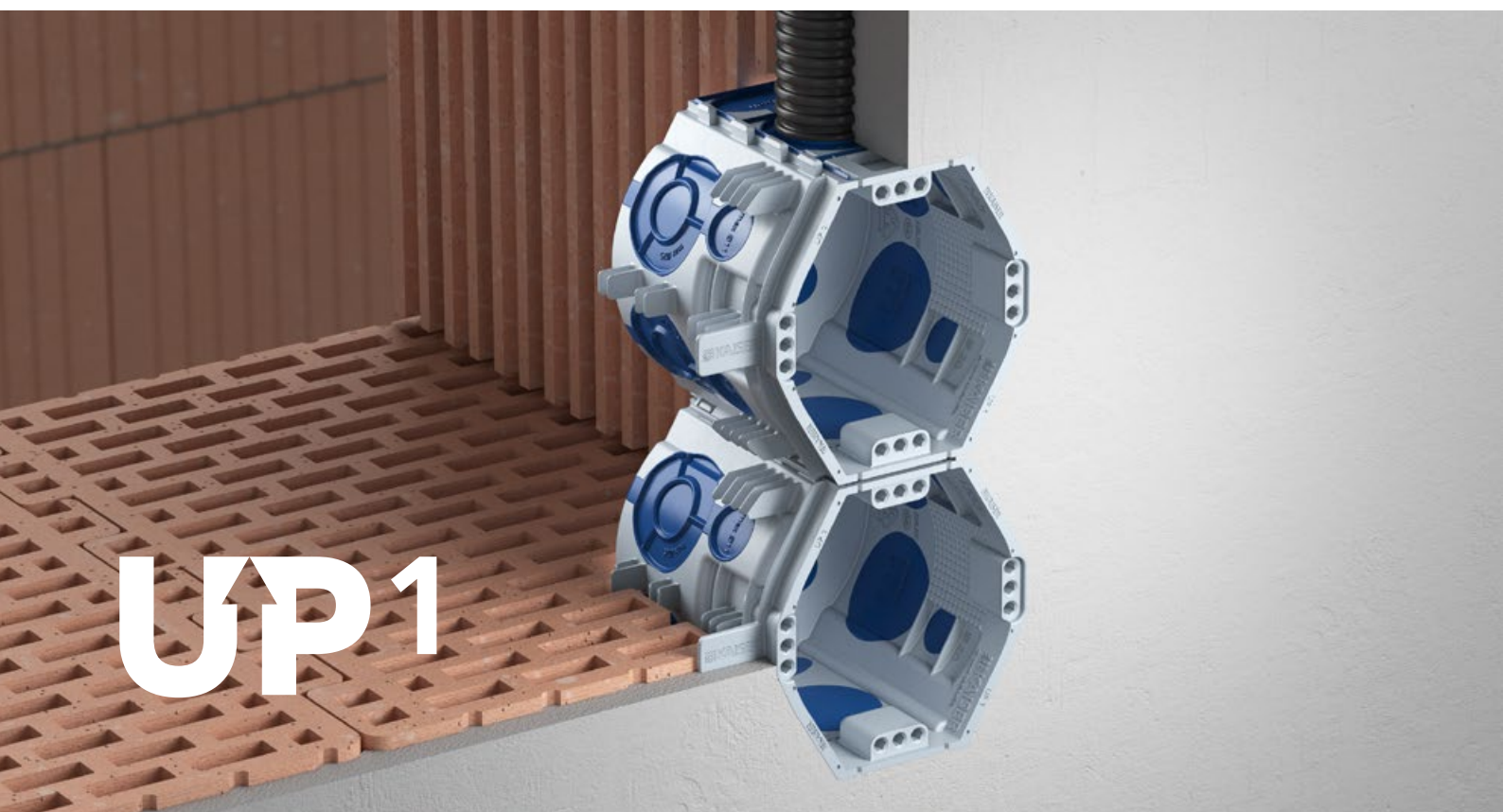


UP¹. Our best UP flush-mounting box. The new flush-mounting programme.



The system UPdate for your optimal installation.

**Open through-wiring,
breakaway bridge and conduit entry**
Device connection without spatial separation

50% time-saving
Secure fixation in all stones
without plaster or similar
additional fixation with PU foam
possible

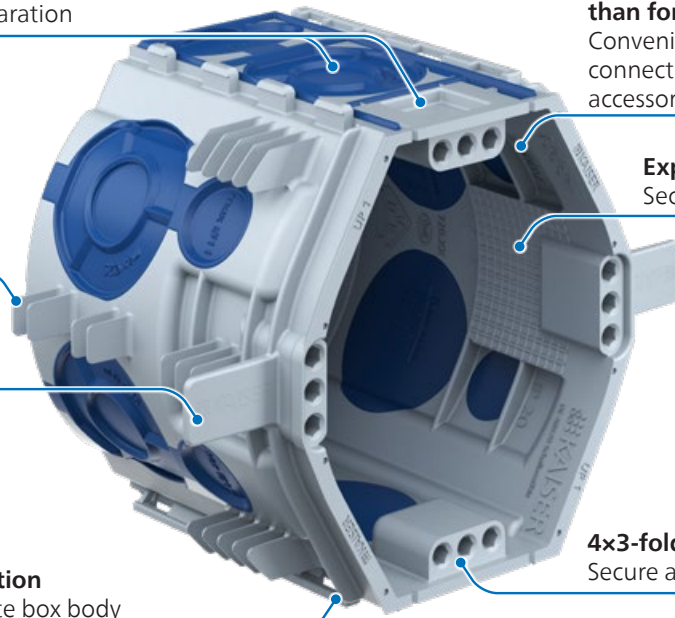
Depth stop
To ensure minimum plaster thickness

Stable and side-neutral combination
Safe combination over the complete box body

**25% more installation volume
than for Art. No. 1555-21**
Convenient accommodation of leads
connecting terminals and installation
accessories

Expanding claw fields
Secure and flexible accessory fitting

4x3-fold screw domes
Secure and flexible accessory fitting



Triple conduit feed M25 from one direction
No restriction of conduit feed, e.g. next to doors

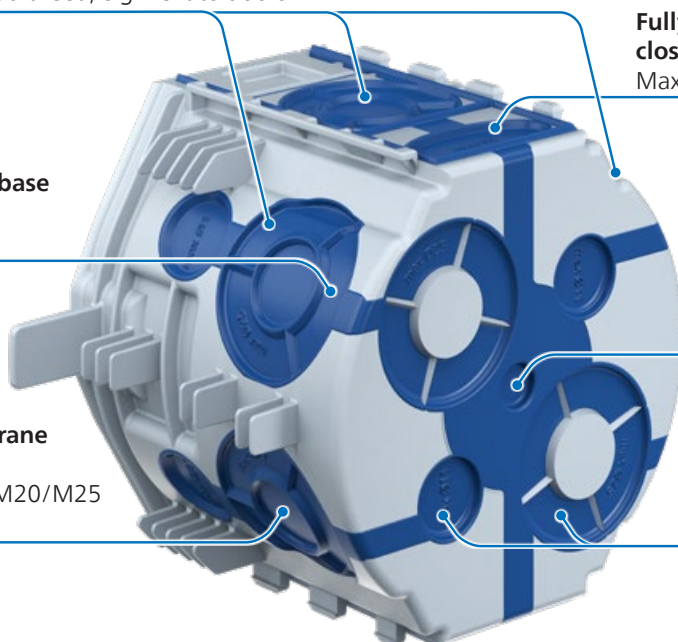
Entries close to the base
Maximum usable
wiring space

ECON® Multi-Membrane
Air-tight and toolless
insertion of conduit M20/M25
or several cables

**Fully insulated through-wiring
close to the base**
Maximum usable wiring space

**Central TPE membrane in the bottom
of the box**
Box fixation possible by means of PU foam

**2 cable and 2 conduit entries
in the bottom of the box**
Hard component in the conduit entries
secures the inner volume against pres-
sure from plaster or expanding PU foam



UP¹ flush-mounting boxes

UP¹, the new flush-mounting programme for electrical installation, takes flush-mounting installation to a new level and makes it easier than ever before. 25 % more installation volume compared to conventional flush-mounting one-gang junction boxes enables convenient accommodation of conductors, connection terminals and installation accessories. The quick-fixing by means of ribs in all stones ensures up to 50 % time savings during installation without plaster. The side-neutral and stable combination quickly allows multiple combinations to be created at 71 mm centre distance. Thanks to open through-wiring and breakaway bridge, the device connection can be made without spatial separation. Accessories that are already wired, especially sockets, can thus be installed particularly quickly and easily. The entries close to the base and through-wiring close to the base maximise the usable wiring space and facilitate the installation of the installation accessory due to the low-lying wiring material. Thanks to expanding claw fields and 4 x 3-fold screw domes, fixing the accessory is easier and more flexible than ever before. The new plaster compensation frame enables continuous plaster compensation from 10 to 35 mm with only one accessory.

- 25 % more volume compared to conventional UP one-gang junction boxes
- Quick mounting in all wall constructions (box variants with ribs on the box, no installation of accessories, use of PU foam is possible)
- Stable and side-neutral combination
- Open / diverse through-wiring
- Fully insulated through-wiring close to the base for deep boxes
- Entries close to the base
- Triple conduit feed M25 from one direction to one-gang and one-gang junction boxes
- ECON® multi-cable conduit entries
- 4 triple screw domes / expanding claw fields
- Entries in the bottom of the box
- Stepless plaster compensation (accessories)



To the trailer

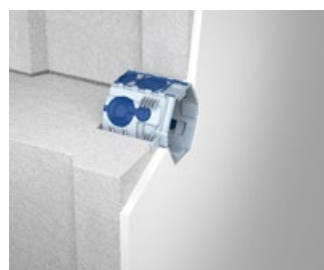
Examples of use



Vertically perforated bricks with and without filling, solid bricks.



Lightweight concrete.



Cellular concrete.



Lime sand brick.

Processing instructions



All UP¹ one-gang boxes offer generous installation space for the convenient accommodation of leads, connection terminals and installation accessories.



Overlapping box diameters allow for a stable combination and open through-wiring.



Connecting accessories can be implemented in many different ways,...



...this makes it possible, amongst others, to insert the connecting cables of pre-wired accessories such as sockets quickly and easily without having to connect them in the sockets first.

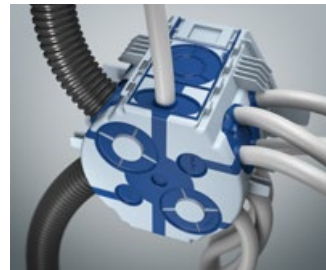
Processing instructions ECON® Multi-Membrane



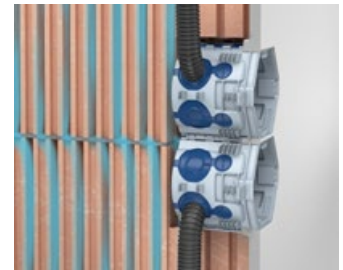
The toolless cable and conduit entries reduce installation time and make processing easier.



The elastic sealing membrane fits air-tight around the conduit or cable.



Each cable and conduit diameter up to Ø 25 mm can be installed quickly and air-tight.



Vertical draughts occur in hollow chamber blocks. The UP¹ boxes with ECON® technology prevent air exchange.

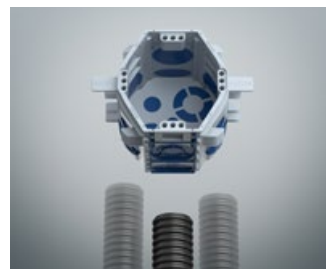
Processing instructions - Entries



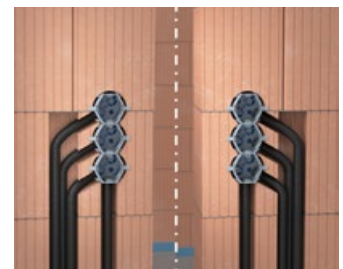
Due to entries close to the base, the leads can be stowed directly on the base and take up little space.



Maximum usable space, thanks to fully insulated through-wiring close to the base.



Maximum flexibility thanks to three feeds up to M25 from one direction...



...e.g. next to door openings.



The UP¹ boxes also have entries in the base...



...2 inlets each up to Ø 11 mm and 2 inlets each up to Ø 25 mm with stiffening against pressure from plaster or expanding PU foam.



All cable and ECON® Multi-Membranes are labelled...

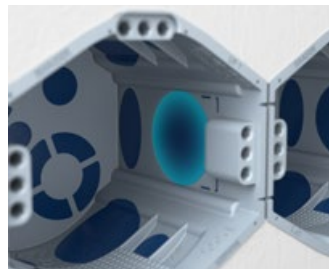


...this makes it easier to select the optimal entry.

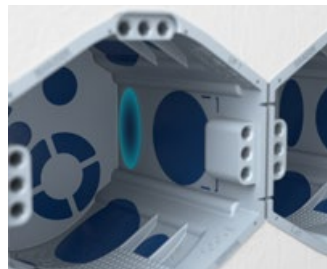
Processing instructions - Combination



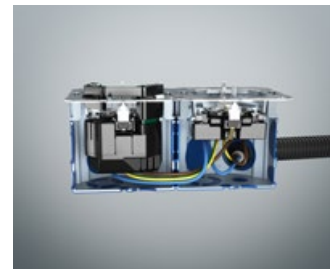
Connecting accessories can be implemented in four different ways:



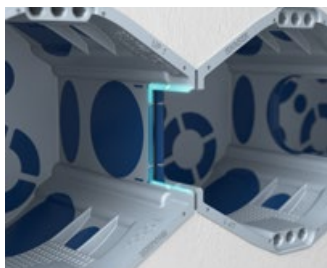
Classically connect in the middle area of the one-gang junction box...



...or by the fully insulated connection close to the base in the one-gang junction boxes,...



...without routing the lead in bends from one box to the other.



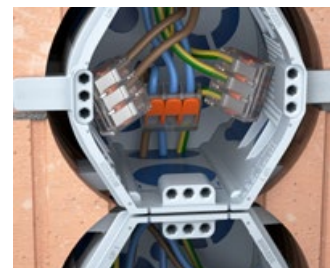
Moreover, in the case of permanently installed boxes, it is possible to break out the separator wall between the combined boxes in the upper area simply with a pair of combination pliers by means of a tilting movement...



...furthermore, the underlying ECON® Multi-Membrane can also be removed for even more wiring space.



This makes it possible to insert the connecting cables of pre-wired accessories such as sockets quickly and easily without having to connect them in the sockets first.



All UP¹ one-gang boxes offer generous installation space for the convenient accommodation of leads, connection terminals and installation accessories.

Secure connection with the new side-neutral combination

The audibly safe combination with the KAISER combination. Place the boxes next to each other. No matter which way around. And press them together with a "click". Now you have stable combination with a standardised combination distance of 71 mm.



No matter which way the boxes meet...



...press to each other...

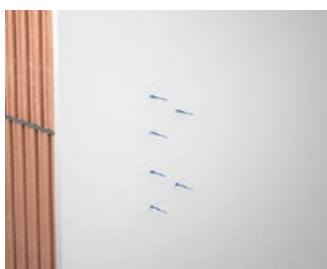


...and the boxes lock together stably.

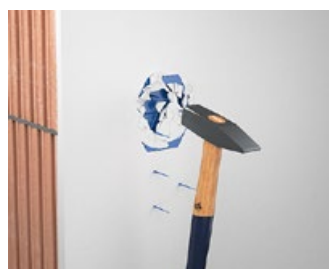


Stable and side-neutral combination in 71 mm standardised combination distance.

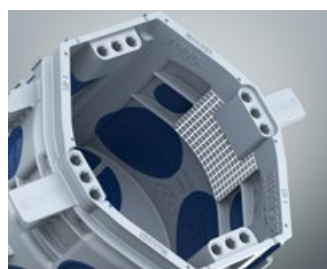
Electrical installation



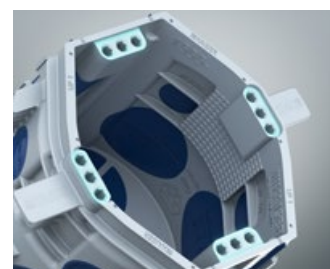
The signal bristles indicate the position of the boxes after plastering.



Open the boxes with one blow of the hammer.



Accessory fixing by means of: expanding claws or...



...4 x 3 screw domes for maximum flexibility.

Technical assembly instructions

The quick-fixing of the UP¹ ECON® Fix boxes saves up to 50 % installation time compared to the conventional installation of flush-mounting boxes with plaster. The box is securely fixed in the wall and held in position before plastering.

- For fitting boxes without plaster
- For all common bricks such as lime sand brick, cellular concrete, lightweight concrete, vertically perforated bricks with and without filling
- Secure, clean and time-saving
- Alignment and secure mounting even before plastering
- Can also be used at below zero temperatures
- By plastering the wall and penetrating the annular gap around the box, the box is finally and permanently fixed.
- Not applicable when using clay or thin plaster

Installation advantages - Installation without plaster



The UP¹ ECON® Fix family with rib fixing for mounting without plaster.



Fixing with ribs on several levels for secure fixing in all stones.



Depth stop to ensure the minimum plaster thickness.



The plaster penetrates between the box and the stone, ensuring that the box is securely and permanently fixed.

Installation - Installation without plaster



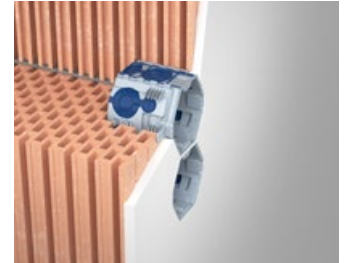
Make the installation opening Ø 82 mm with the diamond grinding crown (Art. No. 1088-02).



Insert the UP¹ one-gang or one-gang junction box with ribs.



Put on the signal cover (Art. No. 1181-65) and plaster the wall.



The penetration of the plaster between the box and the stone fixes the box securely and permanently.

Installation instructions - Installation with flush-mounting gun foam



Alternatively, the UP¹ ECON[®] Fix boxes can be fixed with flush-mounting gun foam (Art. No. 1155-95).



Make the installation opening \varnothing 82 mm with the diamond grinding crown (Art. No. 1088-02).



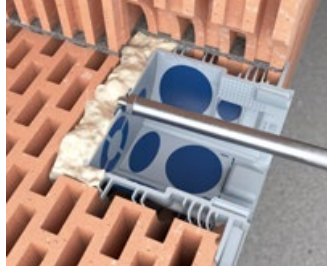
Spray the wall with water...



...and insert the UP¹ one-gang or one-gang junction box with ribs.



Pierce the TPE membrane in the centre of the bottom of the box...



...and foam-in the box.



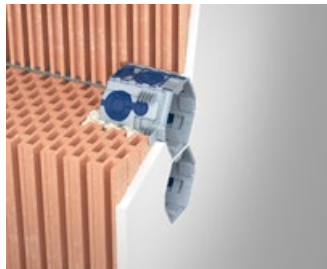
If necessary, remove excess foam after curing so that plaster can still penetrate between the box and the stone.



Then fit signal cover (Art. No. 1181-65) ...



...and the wall is plastered.



The penetration of the plaster between the box and the stone fixes the box securely and permanently.

One-gang box UP¹ ECON[®] Fix

NEW

INNOVATION



To the trailer

- More volume than conventional one-gang boxes
- Variant with quick fixing for installation without plaster
- With 4 x 3 screw domes
- Side-neutral combination
- Many through-wiring possibilities
- Standardised combination distance 71 mm



Depth	46 mm
Drill hole Ø	82 mm
With depth stop	Yes
With quick-fixing (also suitable for PU foam)	Yes
Screw spacing	60 mm
Toolless cable and conduit entries in the combination area up to M25	2
Toolless cable and conduit entries up to M25 at box circumference	4
Toolless cable entries up to Ø 11 mm in the base of the box	2
Toolless conduit entries up to M25 in the base of the box	2
Halogen-free	Yes
Air-tight	Yes
Art. No.	1055-26
Packaging inner/dispatch	25 / 250
PG 120 Price € / 100 pieces	210.00

One-gang junction box UP¹ ECON[®] Fix

- More volume than conventional one-gang boxes
- Variant with quick fixing for installation without plaster
- with 4 x 3 screw domes and 2 expanding claw fields
- Side-neutral combination
- Many through-wiring possibilities
- Standardised combination distance 71 mm

NEW

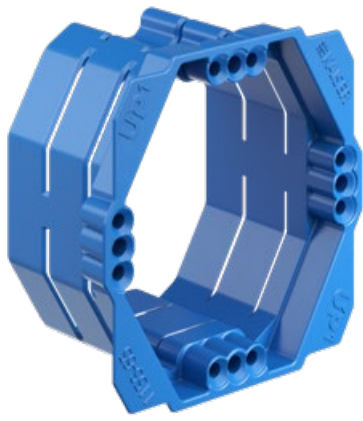


INNOVATION



To the trailer

Depth	66 mm
Expanding claw fields	2
Drill hole Ø	82 mm
With depth stop	Yes
With quick-fixing (also suitable for PU foam)	Yes
Screw spacing	60 mm
Toolless cable entries up to Ø 11 mm close to the base in the combination area	2
Toolless cable and conduit entries in the combination area up to M25	2
Toolless cable entries up to Ø 11 mm at box circumference	4
Toolless cable and conduit entries up to M25 at box circumference	4
Toolless cable entries up to Ø 11 mm in the base of the box	2
Toolless conduit entries up to M25 in the base of the box	2
Halogen-free	Yes
Air-tight	Yes
Art. No.	1555-26
Packaging inner/dispatch	20 / 200
PG 120 Price € / 100 pieces	250.00



NEW

UP¹ stepless plaster compensation frame

With the newly developed compensation frame, even accessories in boxes that are installed too low can be installed flush with the wall and in compliance with standards. Also ideal for renovations. The compensation frame is steplessly adjustable and can therefore, e.g. bridge retrofitted wall plaster or tiled walls professionally.

- To compensate for boxes that are positioned too low
- Steplessly adjustable from 10 - 35 mm
- Installation accessories can be installed directly with the compensation frame or retrofitted
- Including screws 40 mm, Pozidriv drive



INNOVATION



Processing instructions



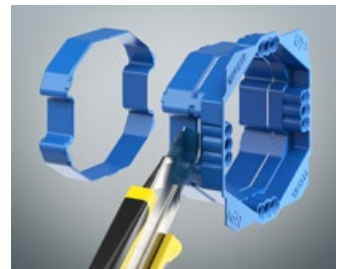
Insert the compensation frame into the box.



Either mount the accessory and the compensation frame together on the box with a screw...



...or first mount the compensation frame and fix the installation accessory later.



The compensation frame can be shortened in segments if required.

UP¹ stepless plaster compensation frame

NEW



INNOVATION



To the trailer

- to compensate for deep-seated boxes
- to maintain IP protection class
- with 2 fixing screws 40 mm

Height	10 – 35 mm
Screw spacing	60 mm
Steplessly adjustable	Yes
For UP ¹ one-gang boxes and UP ¹ one-gang junction boxes	Yes
Art. No.	1155-65
Packaging inner/dispatch	10 / 100
PG 120 Price € / 100 pieces	160.00

UP¹ signal cover

The signal cover for the new UP¹ one-gang and UP¹ one-gang junction boxes protects the inside of the box and the screw domes during plastering, while the tried-and-tested signal bristles make it easier to find them after plastering. The soft signal bristles gently wrap around and prevent splashing when cleaning.

- Protects interior of box, screwing dome and screw heads when plastering
- Signal bristles facilitate finding after plastering
- Soft signal bristles gently wrap around and prevent splashing when plastering
- Reusable


NEW

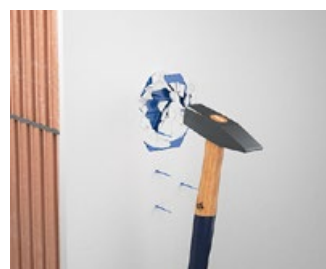
Processing instructions



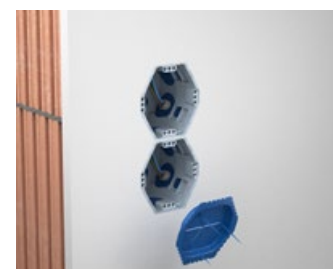
Fit signal cover (Art. No. 1181-65).



When plastering, the soft signal bristles wrap around without splashing and at a later time, indicate the position of the box.



After opening with one blow of the hammer...



...the boxes are cleanly opened, the signal lid can be used several times.

UP¹ signal cover

NEW

- Reusable
- Protects interior of box, screwing dome and screw heads when plastering


INNOVATION


To the trailer

for installation opening	60 mm
For UP ¹ one-gang boxes and UP ¹ one-gang junction boxes	Yes
Art. No.	1181-65
Packaging inner/dispatch	50 / 1000
PG 120 Price € / 100 pieces	42.00

Flush-mounting gun foam

NEW

- For additional fixing of the UP¹ ECON® Fix boxes
- For application with commercially available PU foam guns with M65 threaded connection
- Can be used with Art. No. 1055-26 and 1555-26
- 1-component PU foam



Content	750 ml
Art. No.	1155-95
Packaging inner/dispatch	- / 12
PG 120 Price € / 100 pieces	3500.00

Systems and solutions for professional electrical installation work.

KAISER has been developing and producing systems and products as the basis for professional installation work since 1904. Planners and fitters all over the world use our practice-oriented solutions for their daily work in all installation areas.



Energy efficiency.

Innovative KAISER products help you to ensure compliance with the requirements of EU Directives and national regulations, such as the German Energy Act for Buildings (GEG, formerly EnEV).



Radiation protection.

The use of the new radiation protection boxes allows the radiation protection of the wall to be maintained without additional shielding measures.



Fire protection.

KAISER fire-protection systems provide reliable solutions for electrical installations in fire-protection walls and ceilings.



Construction.

KAISER has matching product system solutions for safe, durable and practical use in redevelopment, renovation and modernisation projects.



Sound insulation.

KAISER's innovative sound insulation boxes ensure compliance with the construction requirements for sound insulation walls, as well as for built-in installations.



Concrete construction.

Complete systems for on-site mixed concrete, factory production and prefabricated room modules. Fully optimised to professional electrical installation work.

Technical information and advice

All further information on products, system solutions and communication media can be found on our website at www.kaiser-elektro.de

For any additional questions or information, please do not hesitate to contact our technical support team who will be happy to assist you: **+49 (0) 23 55 / 809-61** · technik@kaiser-elektro.de

KAISER GmbH & Co. KG

Ramsloh 4 · 58579 Schalksmuehle
GERMANY
Phone: +49 (0) 23 55 8090 · Fax: +49 (0) 23 55 80921
www.kaiser-elektro.de · info@kaiser-elektro.de

