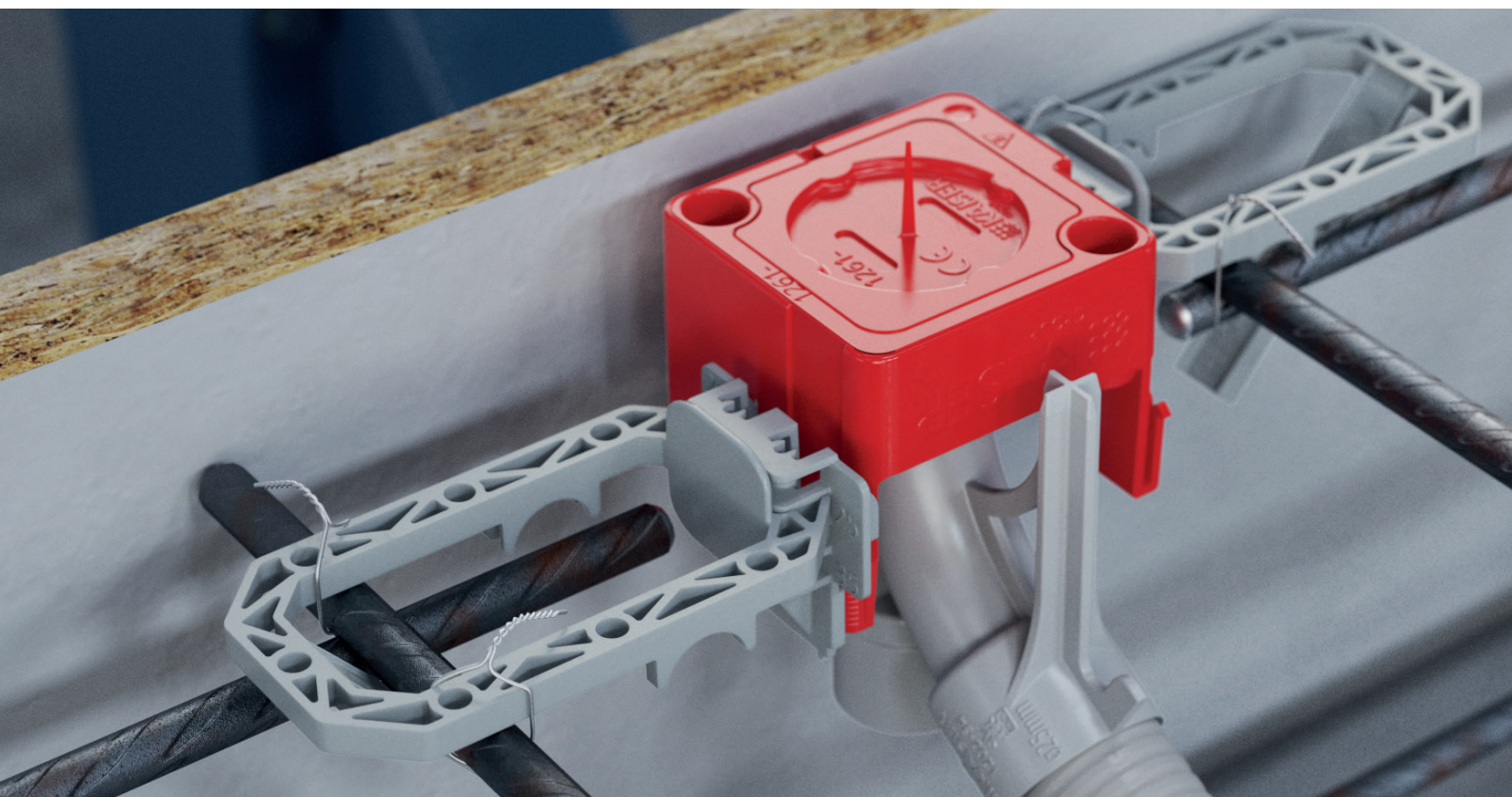
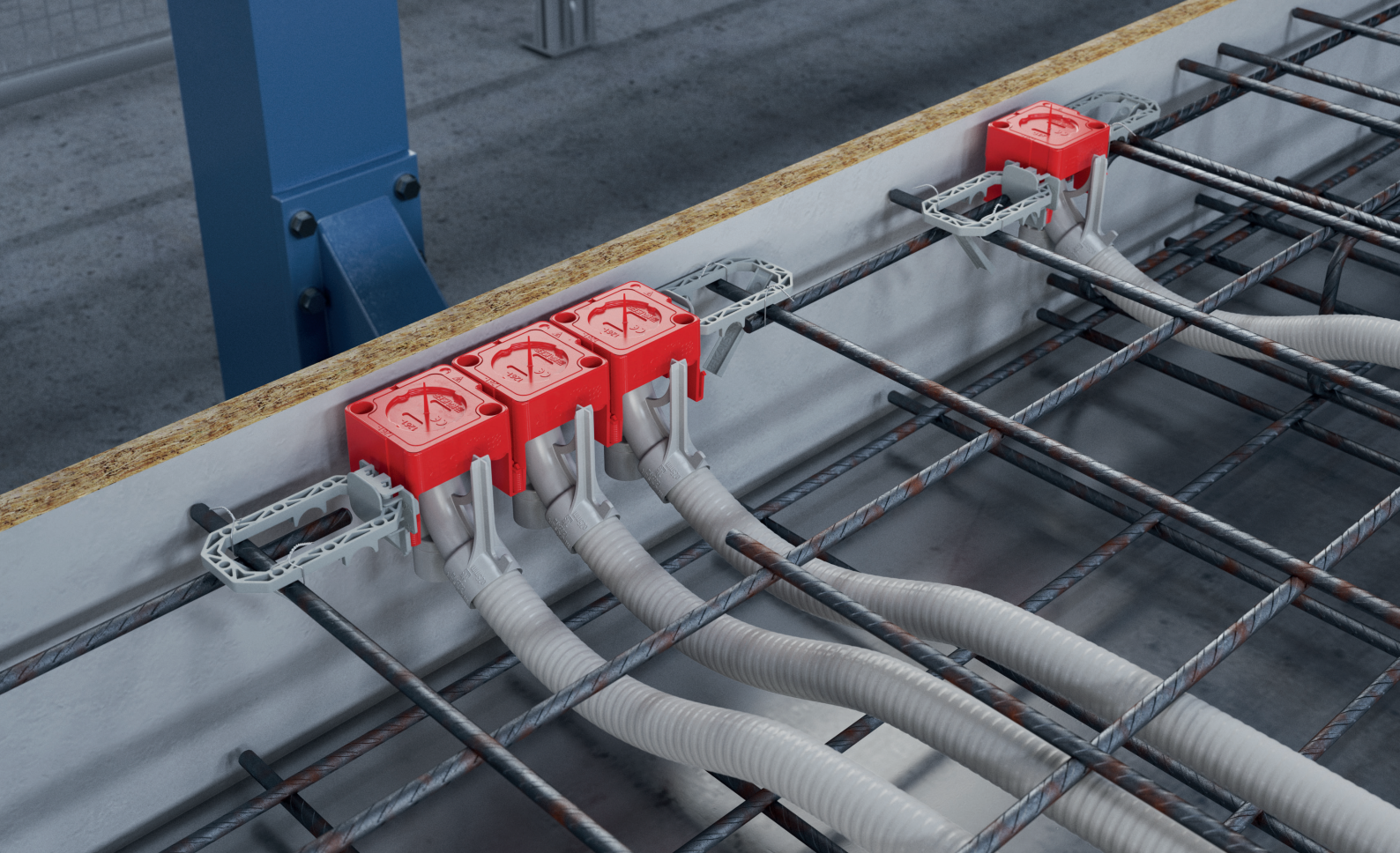


Prefix® universal support.

The new standard for opposing formwork side installations in precast concrete.

Concrete construction - More efficiency in solid wall production.





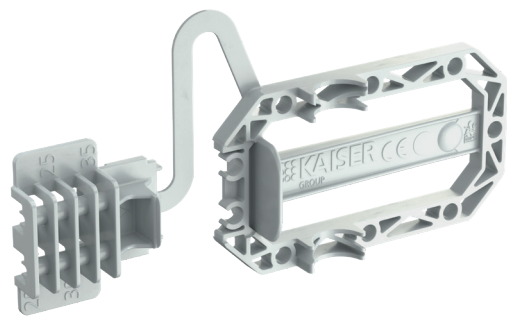
The Prefix® universal support.

Perfect connections for installation on the opposing formwork side.

The Prefix® universal support enables simple, fast fitting of electrical installations in solid wall elements on the opposing formwork side without a support element for the steel formwork table. The support can be easily adjusted to the required concrete covering by means of a snap-in connection and attached to the new end and transition bushes and wall and ceiling transitions 30° by means of a snap-in connection.

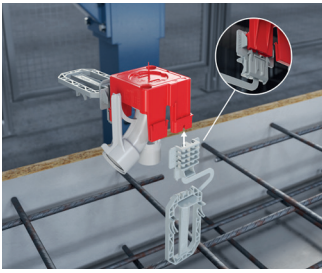
The previously common and costly single constructions made of wooden blanks can thus be dispensed with. Disturbances of the further production process are a thing of the past and the production of a good wall surface quality is fully guaranteed.

- For opposing electrical installations in prefabricated solid walls without support
- With integrated dimension indication, easily adjustable to the common concrete ceilings 20, 25, 30 or 35 mm
- Generous tolerance compensation for fixing to the reinforcement
- Prefixing using Prefix® installation technology leaves both hands free for fastening with tie wires

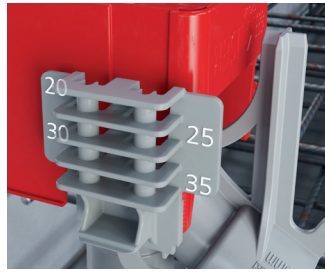


Prefix® universal support
1261-00

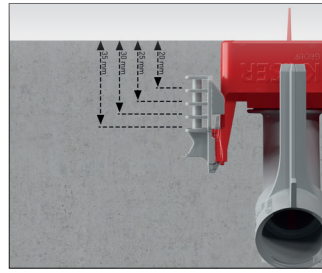
Processing instructions



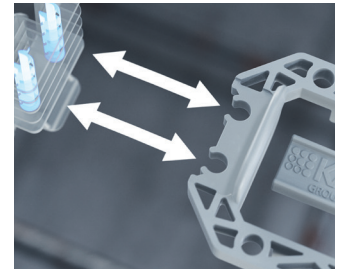
The new wall and ceiling transitions for precast concrete each have two opposing stable slots for the Prefix® universal support.



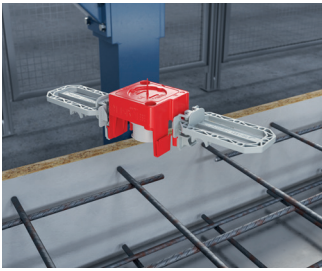
The required concrete ceiling can be quickly read off and precisely set using the dimensional scale. The dimensional scale is adjusted, so that the wall-ceiling transitions are minimally below the subsequent wall surface...



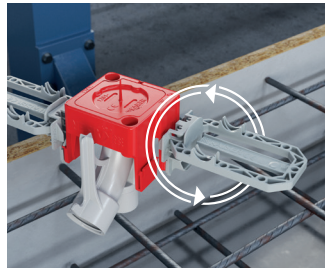
...and therefore do not impede the next steps in the manufacturing process. The signal bristle keeps the position of the exits visible in the concrete surface.



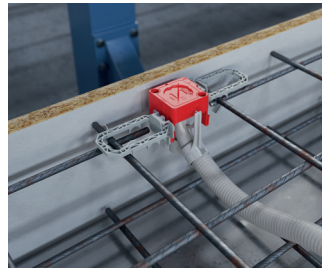
Prefix® universal supports have a stable snap-in connection and can be released and repositioned if the concrete ceiling is set incorrectly.



With the Prefix® universal support, all end and transition bushes, as well as the wall and ceiling transition 30° for factory production, can be...



...installed on top for conduit sizes with 20 mm, 25 mm and 32 mm diameters without any support elements.



The wall and ceiling transitions are made in the reinforcement by means of Prefix® installation technology and fixed with tie wire, then the conduit connection is made.

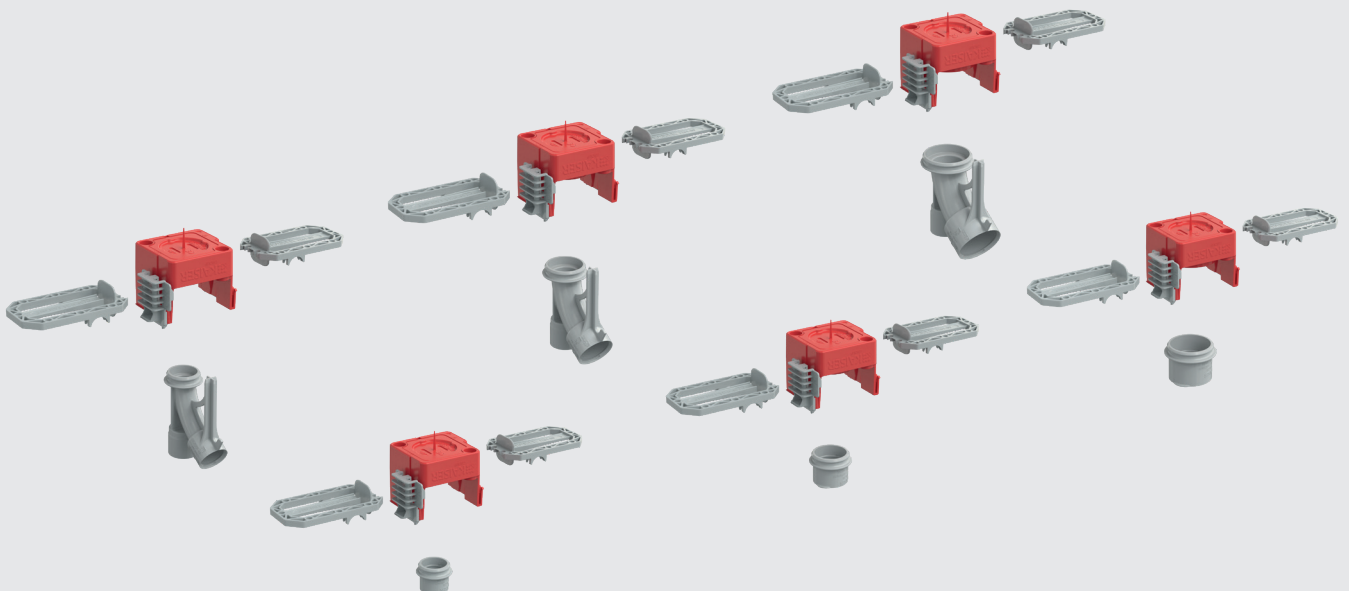


During the concreting process, the concrete can also flow underneath and no fixing marks remain in the concrete surface to the rear.

Wall and ceiling transitions

The new end and transition bushes as well as wall and ceiling transitions 30° offer alternative options for fixing to formwork.

They can be fixed for opposing installation in solid wall elements using Prefix® Universal supports (Art. No. 1261-00).

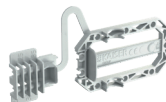


At a glance.

NEW

Prefix® universal support

- For installations in prefabricated solid walls
- Facilitates fixing to the reinforcement
- Adjustable to concrete ceilings 20, 25, 30 or 35 mm
- Pre-fixing by means of Prefix® installation technology
- Can be used for the following articles:
 - End and transition bushes / Art. No. 1261-82/-83/-84
 - Wall and ceiling transitions 30° / Art. No. 1261-92/-93/-94

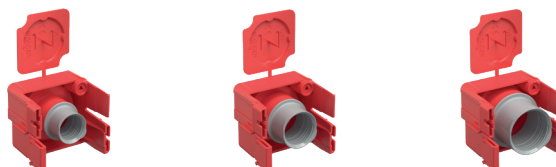


Assembly instructions

INNOVATION

Length x width x height	87 x 45 x 36 mm
Number of parts	1
for concrete covers	20, 25, 30, 35 mm
Art. No.	1261-00
Inner/dispatch packaging	- / 350

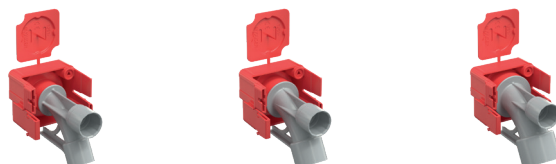
End and transition bushes



INNOVATION

Length x width x depth	53 x 64 x 48 mm	53 x 64 x 48 mm	53 x 64 x 49 mm
DIN EN conduit Ø	20 mm	25 mm	32 mm
Number of parts	2	2	2
Art. No.	1261-82	1261-83	1261-84
Inner/dispatch packaging	- / 100	- / 100	- / 100

Wall and ceiling transition 30°



INNOVATION

Length x width x depth	80 x 64 x 86.5 mm	81 x 64 x 86.5 mm	86 x 64 x 91 mm
DIN EN conduit Ø	20 mm	25 mm	32 mm
Number of parts	2	2	2
Art. No.	1261-92	1261-93	1261-94
Inner/dispatch packaging	- / 100	- / 100	- / 100

Technical information and advice

All further information on products, system solutions and communication media can be found on our website at www.kaiser-elektro.de

For any additional questions or information, please do not hesitate to contact our technical support team who will be happy to assist you: **+49 (0) 23 55 / 809-61** · technik@kaiser-elektro.de

KAISER GmbH & Co. KG

Ramsloh 4 · 58579 Schalksmühle
GERMANY
Phone+49(0)2355.809.0 · Fax+49(0)2355.809.21
www.kaiser-elektro.de · info@kaiser-elektro.de

KAISER
Die Basis der guten Installation