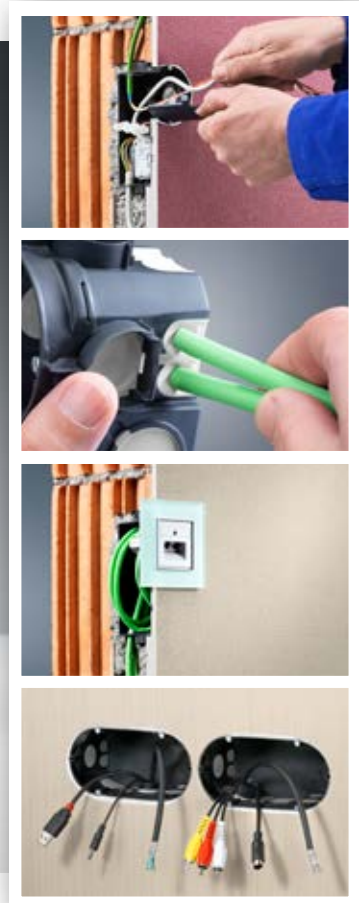


# Electronics box ECON<sup>®</sup> and two-gang junction box ECON<sup>®</sup>.

Easy-to-use installation compartment for modern building installation.

Air-tight electrical installation in masonry walls.





## Electronics box ECON® Two-gang junction box ECON®

The electronics box and two-gang junction box using ECON technology are ideal for installation in masonry walls on which the interior plaster forms the air-tight closure on the room side.

The electronics box ECON® provides a generously-sized accessory installation compartment and an additional space for switch actuators or other electronic accessories.

The two-gang junction box ECON® makes it easier than ever to install special accessories.

The large installation opening and the large installation compartment make it possible to install block and pre-wired accessories etc., and create space for the configuring of cables for multi-media connections.

- Elastic sealing membrane for guaranteed air tightness
- Variable and toolless insertion of single cables, duplex cables and DIN EN conduits
- Additional space for decentral installation of KNX / LON actuators, Venetian blinds cut-off relays, and many more
- Separator wall for standardised fitting of two voltage types in one box
- Maintenance of cable bending radii for network connection boxes – optimal data transfer
- Easy installation of pre-wired accessories and multi-media connection boxes

## Fitting information / Air tightness



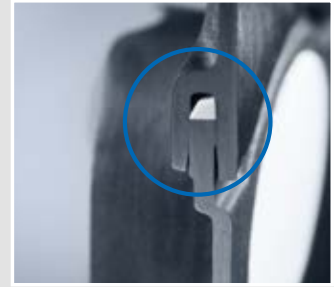
The permanently elastic sealing membrane used in ECON® technology guarantees the airtight connection of cables up to Ø 11 mm, and conduits up to Ø 25 mm.



Even duplex cables can be installed securely and air-tight without an installation conduit.



The sealing membrane fits tightly around the cable or conduit and permanently prevents leakage in external walls and in interior walls next to external walls.



The all-round sealing lip between the box body and the front part ensures an air-tight connection, so it also maintains the air tightness of the building.

## Examples of applications for the electronics box ECON®



By inserting the separator wall, two different voltage types can be fitted in a standardised way in the electronics box. In addition, they provide a generously-sized installation space ...



... for the decentral installation of, for example, small window actuators for controlling Venetian blinds and heating in the external wall. At the same time, ECON® technology keeps the air-tight seal intact.



Thanks to the electronics box, it is easy to install radio-controlled actuators etc. without putting excessive strain on cables or accessories.



Network connection boxes can be used while maintaining the cable bending radii and with the best possible data transfer speeds.

## Examples of applications for the two-gang junction box ECON®



Thanks to its large installation opening without a central bridge, the two-gang junction box allows ...



... the use of pre-wired accessories, block inserts, and many more.



It also provides an easy-to-use basis for the installation of multi-media connection boxes. The very large installation compartment has plenty of space for configuring cables.



Reserve cables and connection plugs can easily be inserted into the box and are then concealed behind the installation accessories.



## Electronics box ECON®

- With separator wall for standardised voltage separation
- Air-tight version with sealing membrane
- 4 screw domes



## Two-gang junction box ECON®

- Air-tight version with sealing membrane
- 6 screw domes



<b>Length x Width x Depth</b>	<b>149 x 80 x 68 mm</b>	<b>149 x 80 x 68 mm</b>
Installation opening	60 mm	60 x 131 mm
Device screws	2	4
Cable entries up to 11 mm	4	4
Duplex cable entries 2 x up to 11 mm	4	4
Conduit entries up to M25	4	4
Conduit entries in the connector area up to M25	4	4
	•	•
<b>Art.-No.</b>	<b>1068-21</b>	<b>1656-21</b>
Inner packaging/Dispatch	10 / 100	10 / 100

## Accessories



**Signal cover**  
1181-60



**Signal cover**  
1181-56



**Distance support**  
1159-34



**Tunnel connector**  
1159-36

## Tools



**Diamond grinding head  
for dust extraction**  
1088-02/03



**Drilling template**  
1190-65



**Dust extraction**  
1088-16/21/41

## There are also electronics boxes ...

... for sound insulation walls



9062-94

... for sound insulation walls



9069-94

... für Brandschutzwände



9462-94

... for concrete walls



1268-40

## Technical information and support

All additional information on our products, system solutions and communication media as well as animations showing our new products are now available on our website: [www.kaiser-elektro.de](http://www.kaiser-elektro.de)

Please do not hesitate to contact our team of technical consultants if you have any questions or require more information.

KAISER telephone: ++49(0)2355.809.61 | KAISER email: [technik@kaiser-elektro.de](mailto:technik@kaiser-elektro.de)



## KAISER GmbH & Co. KG

Ramsloh 4 · D-58579 Schalksmühle  
Tel. +49(0)2355.809.0 · Fax +49(0)2355.809.21  
[www.kaiser-elektro.de](http://www.kaiser-elektro.de) · [info@kaiser-elektro.de](mailto:info@kaiser-elektro.de)

