

Internal insulation box.

One-gang junction box for insulated inner walls.

Safe and heat-bridge-free – protection against moisture damage





Internal insulation box

One-gang junction box for electrical installations in internal insulation systems. For the permanently secure and heat-bridge-free fixing of switches, sockets and other accessories in internal-insulated external walls. For optimal indoor climates with proven protection against moisture damage. For use with many internal insulation systems.

- For installation in insulated inner walls
- Guaranteed heat-bridge-free installation
- Regulates moisture, insulation function
- Prevention of building damage cause by moisture
- For use with many insulation systems
- For insulation thicknesses of 30 to 100 mm
- Fitted to the masonry without plaster



Proof of functionality

A comprehensive components test carried out by the TU Dresden - Institut für Bauklimatik - confirms demonstrably the functionality of the KAISER internal insulation box. The study of the internal insulation systems with $\lambda > 0,03\text{W/mK}$ insulation thicknesses from 30 to 100mm confirms that by using the new internal insulation box, hygrothermic-caused damage can be excluded. The certificate can be downloaded as a pdf file from our website.





1



2



3

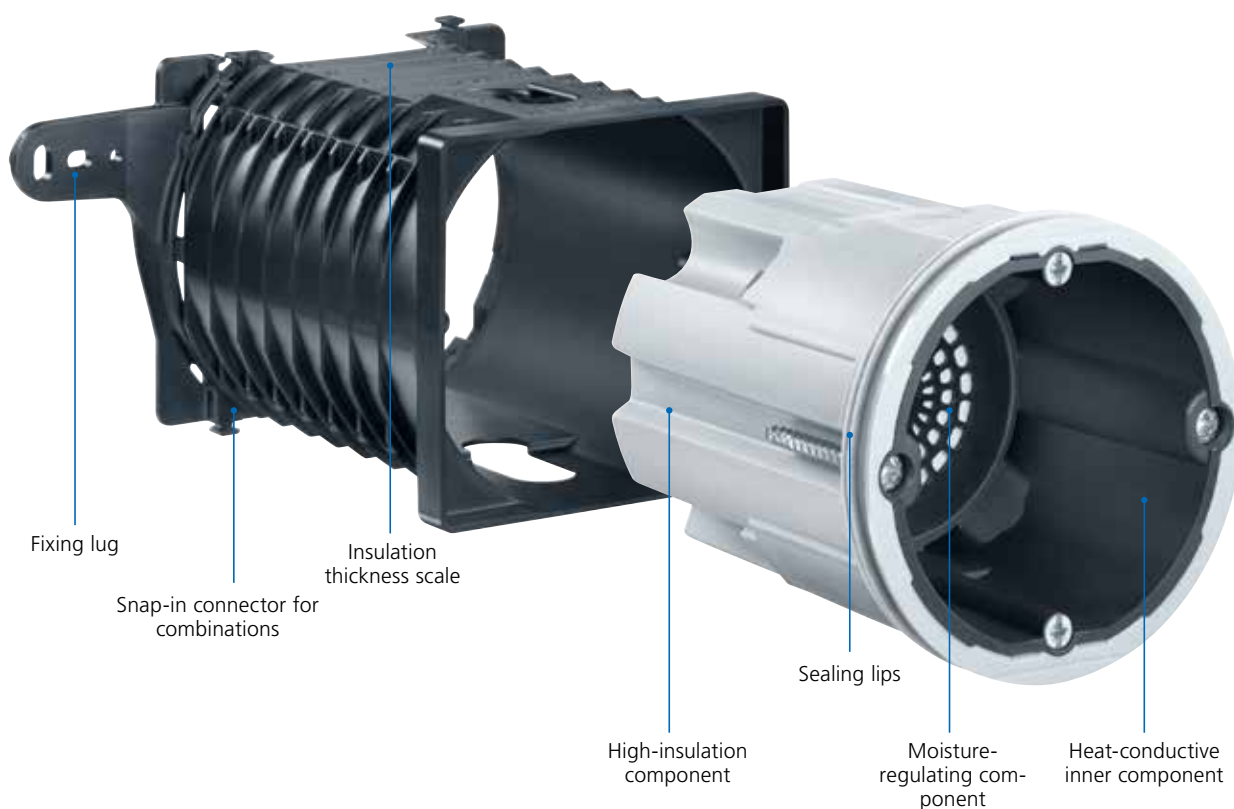


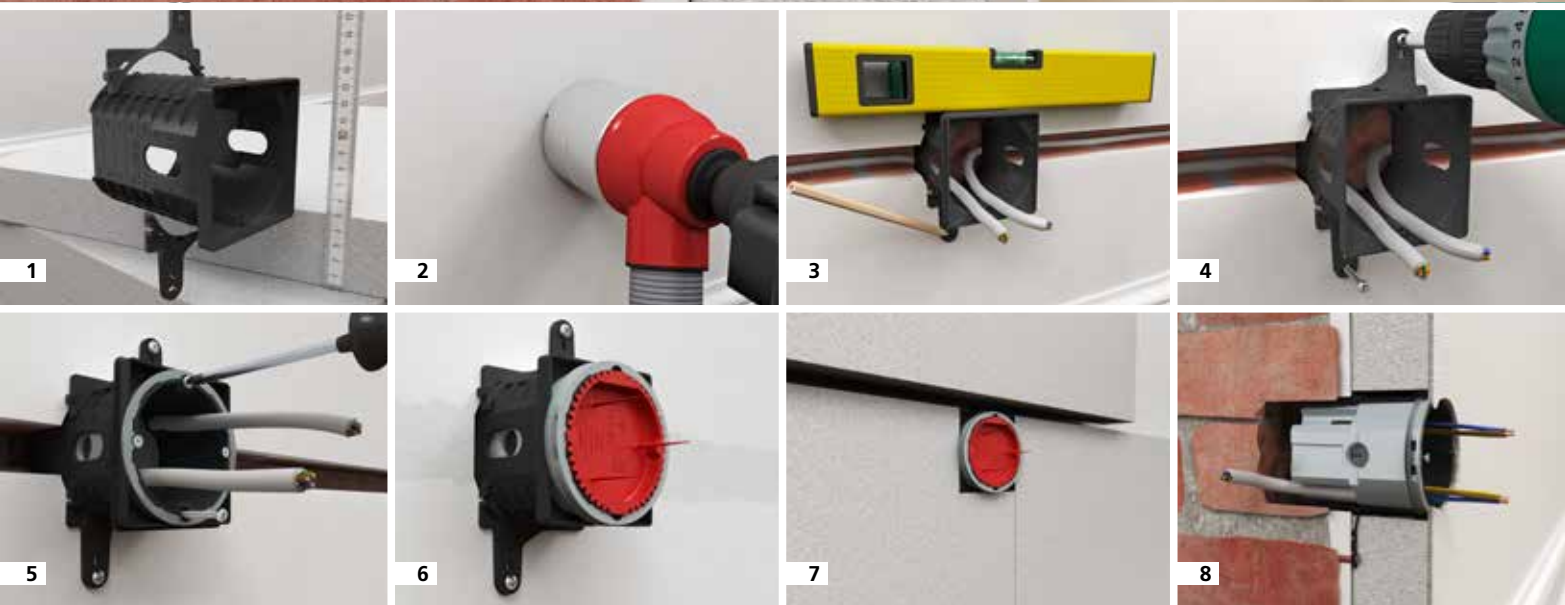
4

The internal insulation box offers the fitter an easy solution to the professional fitting of electrical installations in internal insulation systems. The easy installation and flexible opportunities for application are special features. After installation, it plays an important role in the function of the insulation system.

Processing information

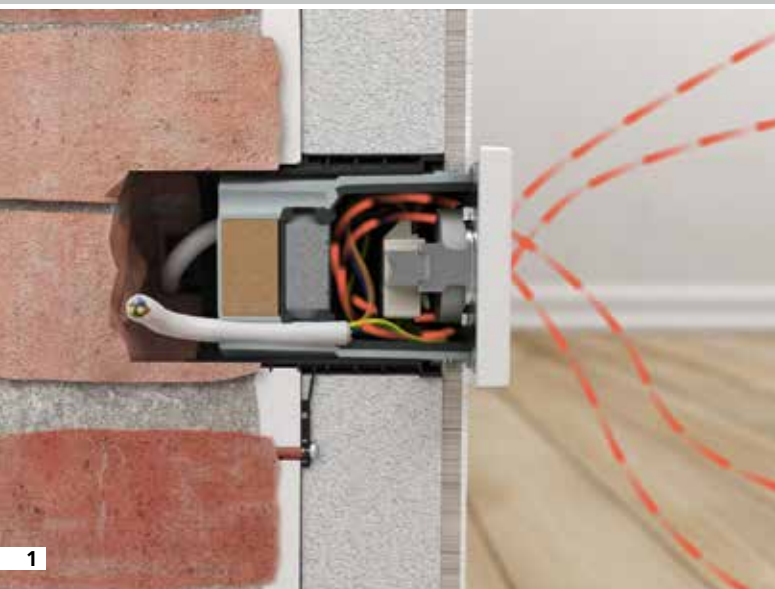
- 1 Installation on masonry without using plaster or mortar
- 2 Dimension details on the adapter allow easy adaptation to the insulation thickness
- 3 The box allows entry of 4 cables up to Ø 11.5 mm.
- 4 Make exact and air-tight cable entry with a drill



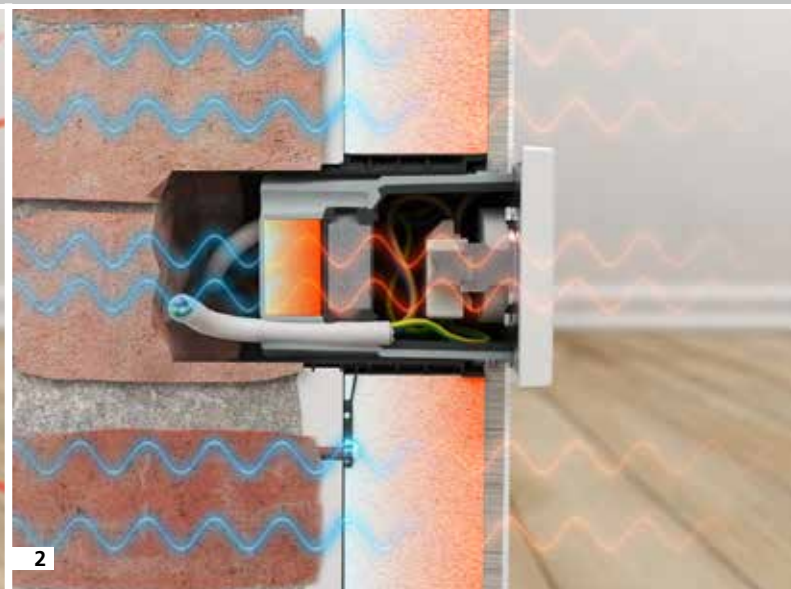


Installation

- 1 Determine the insulation thickness, adjust the fastening plates of the adapter
- 2 For insulation thickness < 100 mm, make a wall opening of \varnothing 82 mm
- 3 Determine the location on the wall and mark it
- 4 Insert the cable into the rear of the adapter, attach the adapter to the wall
- 5 Insert cables into the box, screw the box to the adapter
- 6 Strip the cable, insert the signal cover
- 7 Apply the internal insulation around the box
- 8 Remove the signal cover and fit the required accessory



1



2



3



4

Operating principle of the internal insulation box:

1 Air tightness:

- maintains the air-tight level
- no air flow-through is possible
- rear airflow of the insulation system is prevented
- no convection
- no entry of mould spores

2 Heat insulation:

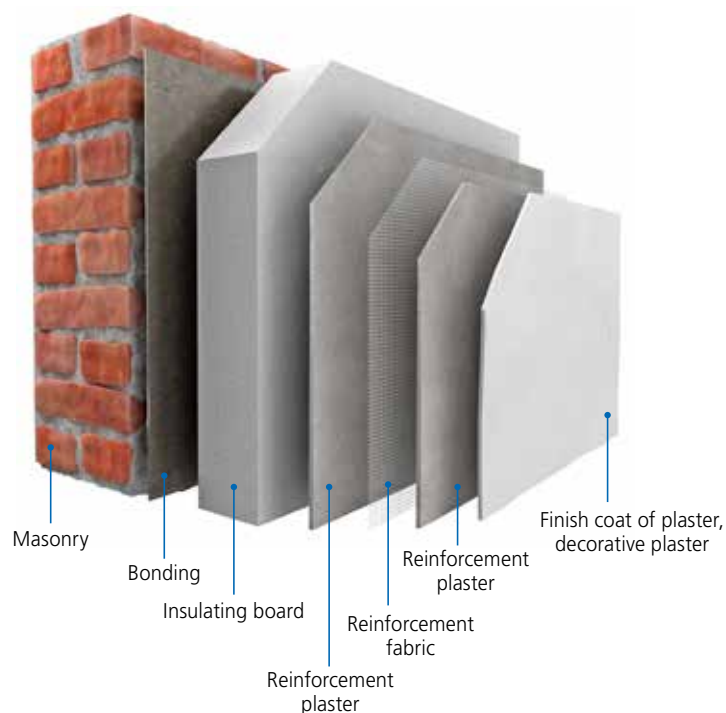
- no heat bridge
- room heat enters the box, but not the cold wall
- insulation component replaces the insulation system function

3 Moisture regulation:

- room-side moisture (caused by insufficient ventilation, many people in the room) is stored
- moisture is released again in a targeted way
- no corrosion of the accessory terminals

4 Heat conductivity:

- highly heat-conductive plastic in the inner box
- room heat is conducted to the box
- the increased surface temperature prevents formation of condensation



Internal insulation box

- One-gang junction box for insulated inner walls
- including fixing adapter
- rear cable entries
- peripheral air-tight sealing lip
- combinations between each other



3D-animations

depth	90 mm
dimensions of adapter (LxWxD)	75 x 81 x 100 mm
for insulation thicknesses	30-100 mm
device screws	2
accessory screw distance	60 mm
cable entries up to Ø 11.5 mm	4
support connectors per PU	3
Art. No.	1159-90
inner packaging/shipping	5 / 50

Supporting connector

- for fully-insulated through-wiring with combinations



Art. No.	9060-88
inner packaging/shipping	25 / 100

Universal opening cutter for plastics

- for making exact entries
- for low-voltage cables from Ø 4 - 7.5 mm
- for cables NYM up to 5 x 2.5 or 7 x 1.5
- for cables NYY up to 5 x 2.5
- for DIN EN conduits (flexible) up to external Ø 20/25 mm
- with ¼" chuck for cordless screwdriver



3D-animations

for exact openings	4 - 22.5 mm
Art. No.	1085-80
inner packaging/shipping	- / 10

Stripping pliers AMZ 2

- integrated knife for longitudinal cutting of longer cable lengths
- ergonomic design - easy-to-use
- hardened and ground cutting knife



for stripping NYM cables	3 x 1.5 bis 5 x 2.5 mm²
Art. No.	1190-02
inner packaging/shipping	- / 10

KAISER GmbH & Co. KG

Ramsloh 4 · 58579 Schalksmühle
 GERMANY
 Tel. +49 (0)23 55/809-0 · Fax +49 (0)23 55/809-21
www.kaiser-elektro.de · info@kaiser-elektro.de