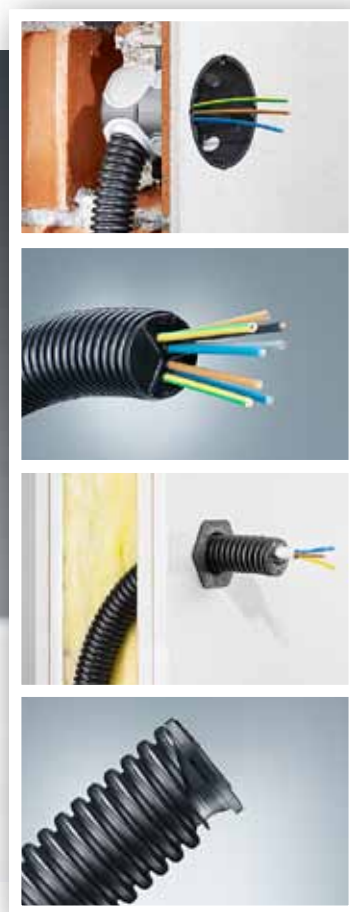


Sealing plug.

For air-tight and smoke-tight closing of electrical installation conduits.

Easy closing – permanently sealed.





Sealing plug

Sealing plugs with ECON® technology for sealing all standard electrical installation conduits in one-gang boxes or at cable outlets.

The long sealing plug with three sealing lips and in different widths adapts itself to the installation conduit in use and guarantees an air-tight and smoke-tight end even when conduits are cut at an angle.

From conduit size M25 upwards, the membrane areas are divided by reinforcing ribs which ensure secure cable routing and air-tightness where the cables pass through.

- For empty conduit installations in an air-tight design or in fire protection areas
- Sealing plug with three sealing lips and different widths adapts itself perfectly to the installation conduit and guarantees an air-tight end
- Elastic sealing membrane for guaranteed air-tightness
- Toolless cable entry
- Reinforcing ribs in the membrane ensure air-tightness for the cables
- For all M16 - M40, Pg 9 – Pg 36, 3/4" and 5/8" installation conduits



Product advantages



When pushed through, the elastic sealing membrane using ECON® technology wraps itself around the cable or individual leads,...



... and prevents uncontrolled air flow.



From conduit size M25 upwards, the membrane areas are reinforced with ribs ...



... which ensure secure cable routing and air-tightness when the cables pass through.

Processing information



The long sealing plug with three sealing lips and different widths adapts itself perfectly to the installation conduit ...



... and guarantees an air-tight end even when conduits are cut at an angle.



When air-tight installation is necessary, the sealing plugs prevent leakage at the conduit ends.



For installations in the field of fire protection, the sealing plug closes the conduit end and ensures smoke-tight room separation.

Sealing Plug

- for sealing all standard M16 – M40, Pg 9 – Pg 36, 3/4" and 5/8" installation conduits

- permanently elastic plastic



Sealing plug

DIN EN conduit Ø

M16

16 mm

M20

20 mm

Art. No.

1040-16

1040-20

Packaging inner/dispatch

25 / 100

25 / 100



Sealing plug

DIN EN conduit Ø

M25

25 mm

M32

32 mm

M40

40 mm

Art. No.

1040-25

1040-32

1040-40

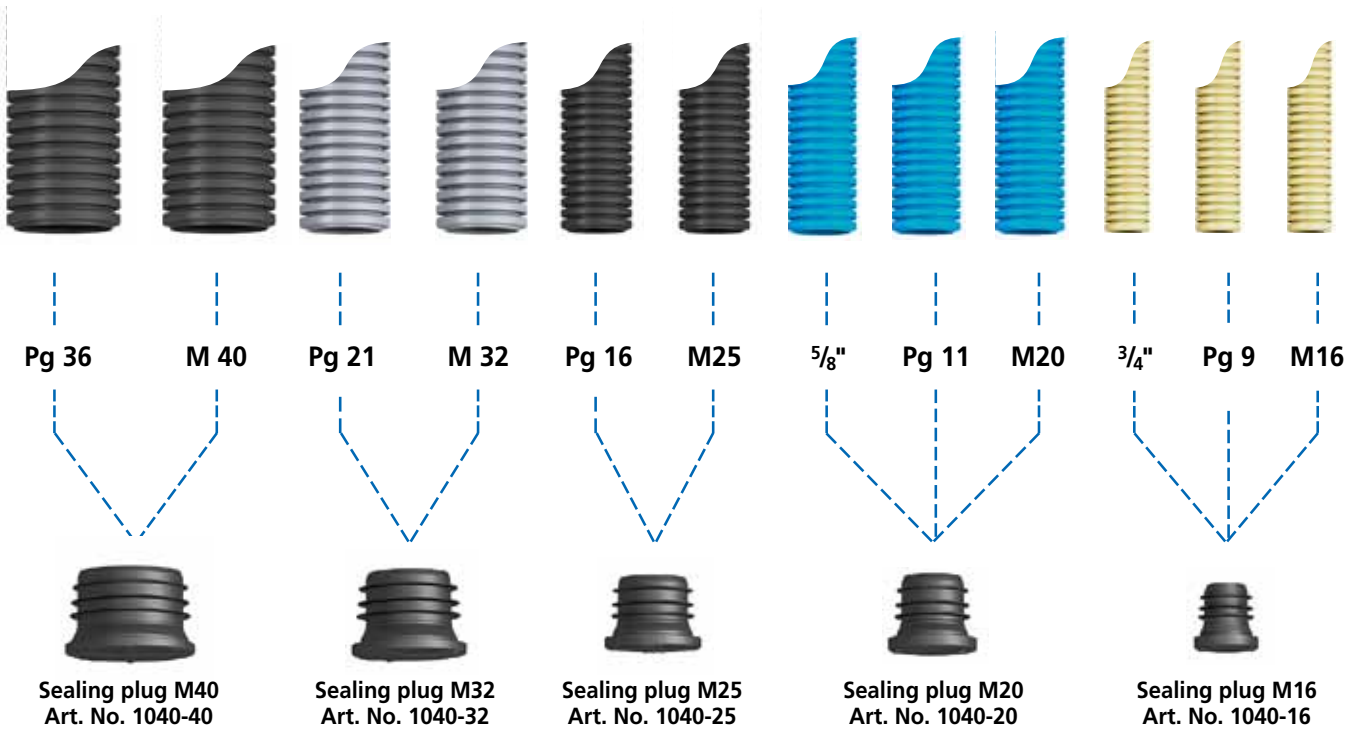
Packaging inner/dispatch

25 / 100

25 / 50

- / 25

Assignment of conduit sizes and sealing plugs



Air-tightness certificate

During comprehensive blower door tests, a neutral institute tested and confirmed the air-tightness of the M16 – M40 sealing plugs.

Technical information and support

All additional information on our products, system solutions and communication media as well as animations showing our new products are now available on our website: www.kaiser-elektro.de

Please do not hesitate to contact our team of technical consultants if you have any questions or require more information.

KAISER Telephone: ++49(0)2355.809.61 | KAISER eMail: technik@kaiser-elektro.de



KAISER GmbH & Co. KG

Ramsloh 4 · D-58579 Schalksmühle
Tel. +49(0)2355.809.0 · Fax +49(0)2355.809.21
www.kaiser-elektro.de · info@kaiser-elektro.de

