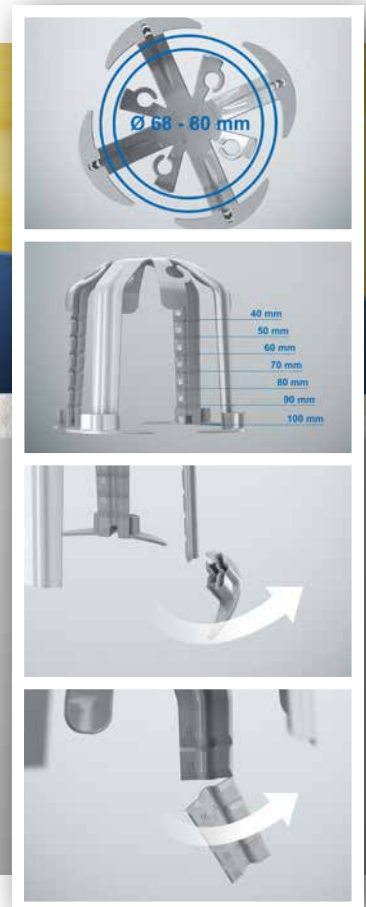


# Spacer.

The solution for luminaire installation in insulated hollow ceilings.

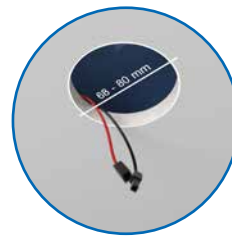
**ONE  
FOR ALL**

One product – maximum flexibility



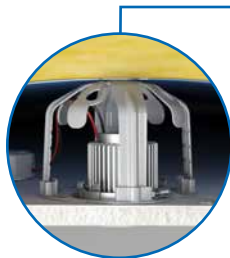
# Spacer

- ✓ For installation in insulated hollow ceilings
- ✓ Retrofitting from underneath
- ✓ Toolless installation
- ✓ For installation openings from  $\text{Ø } 68 - 80 \text{ mm}$
- ✓ Height-adjustable from 100 – 40 mm einstellbar



Suitable for drill hole diameters from 68 – 80 mm.

Height-adjustable from 100 – 40 mm by breaking off the legs.



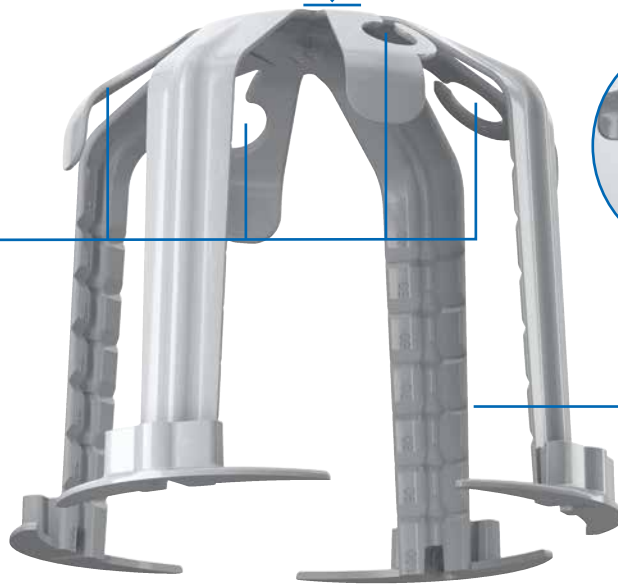
Ensures sufficient clearance to the insulation level.



Stands securely on the ceiling.



Four cable entries.



## Installation



Making the ceiling opening (68 – 80 mm).



Toolless breaking-off of the feet.



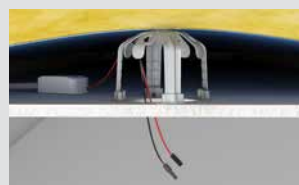
Break the feet off to make the required installation height of between 100 and 40 mm in 10 mm steps.



Latching-on the feet after setting the required installation height.



Installation in openings from 68 – 80 mm.



The spacer stands securely on the ceiling and creates the necessary clearance to the insulation.



For use with all standard luminaires.

<b>Depth of</b>	<b>40 – 100 mm</b>
Front installation cut-hole-Ø	68 – 80 mm
Cable entries	4
max. installation depths for the LED luminaires	95 mm
max. ceiling exit (CE) Ø	80 mm
<b>Art. No.</b>	<b>9310-10</b>

**KAISER GmbH & Co. KG**

Ramsloh 4 · 58579 Schalksmühle  
GERMANY

Tel. +49(0)2355.809.0 · Fax +49(0)2355.809.21  
[www.kaiser-elektro.de](http://www.kaiser-elektro.de) · [info@kaiser-elektro.de](mailto:info@kaiser-elektro.de)



**KAISER**  
The basis for good installation